

Quick Start Guide

Manufacturing an Ultaire™ AKP RPD from a Dentivera™ milling disc follows the majority of procedures that you are currently using for metal, but some are different. This guide assumes use of 3Shape Dental System™ software with the RPD module, and should help to minimize the learning curve. More detailed instructions can be found in the instruction guide.

As you design, please be sure to consider the following parameters in this table which are specific to Ultaire™ AKP.

Akers Clasp	Ultre™ AKP	Co-Cr
Base Width (mm)	2.5+	1.5+
Base Thickness (mm)	1.5+	0.8+
Tip Width (mm)	1.5+	1.0+
Tip Thickness (mm)	1.4+	0.75+
Lingual Rest		
Thickness (mm)	1.5+	0.75+
Occlusal Rest*		
Thickness (mm)	1.25+	0.75+
Retention Grid		
Anterior Thickness (mm)	1.5+	0.75+
Distal Thickness (mm)	1.1+	0.75+
Major Connector**		
Thickness (mm)	1.9+	1.0+
Lingual Bar***		
Width (mm)	7.0+	4.5+
Thickness (mm)	2.5+	1.5+
Minor Connector		
Thickness (mm)	1.25+	0.75+

*Occlusal Rest = Dependent on doctor's preparation and antagonist

**Major Connectors = Palatal Plate, Palatal Strap, AP Palatal Bar, or Closed Horseshoe designs

***Lingual Bars = Standard Horseshoe, Lingual Bar, or Lingual Plate



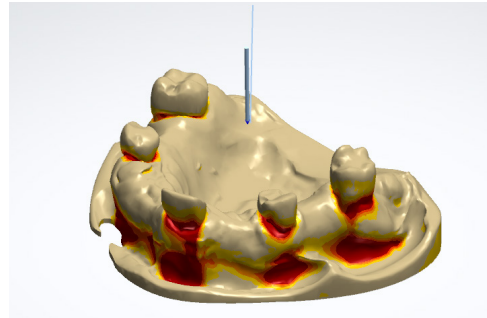
The **“Solvay Dental 360™ Material Settings”** are available for import at www.solvaydental360.com once your lab has been qualified through Solvay University. These settings assume use of 3Shape Dental System™ software with the RPD module, and should be imported BEFORE your lab's first case.

The information provided are recommendations and the user alone must finally determine suitability of any information or products for its contemplated use and its use to be in compliance with FDA regulations and applicable law. The information and the products are for use by technically skilled persons at their own discretion and risk and does not relate to the use of this product in combination with any other substance or any other process. This is not a license under any patent or other proprietary right. Neither Solvay Dental 360™ nor any of its affiliates makes any warranty, express or implied, including merchantability or fitness for use, or accepts any liability in connection herewith or the use of the information.

Ultaire™ AKP Quick Start Guide

1. Surveying and Wax Block Out

- Remove wax block out to reveal 0.25 - 0.5 mm of undercut
- Add a thin layer (~30 microns) of blockout to any gingival margins that will be covered with the Ultaire™ AKP framework



2. Retention Grid and Connectors

The “Ultaire™ AKP Retention Grid” uses a custom circular hole pattern.

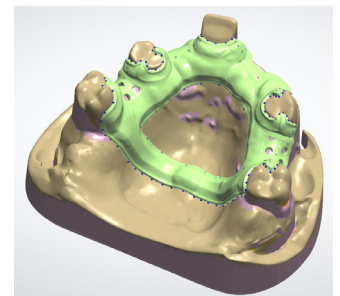
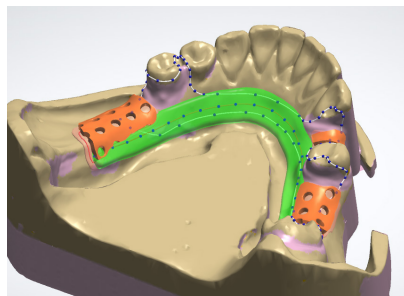
Major Connector (Ultaire™ AKP Major Connector)

Thickness 1.9+ mm

Lingual Bar (Ultaire™ AKP Anatomical Bar)

Width 7.0+ mm

Thickness 2.5+ mm



3. Clasps and Rests

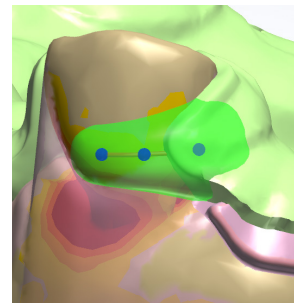
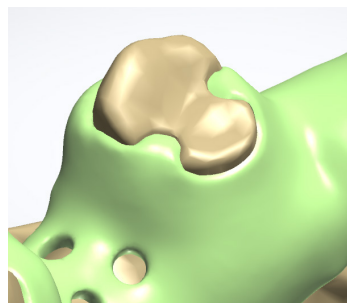
Meet minimum design parameters, avoid sharp inside corners, and encircle the tooth at least 200°.

Deepest clasp engagement should be no more than 0.5 mm

Ultaire™ AKP Clasp

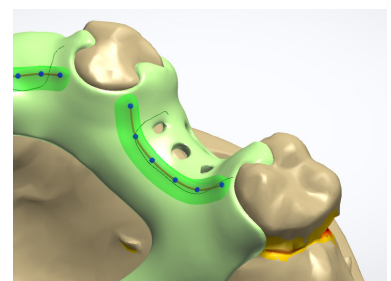
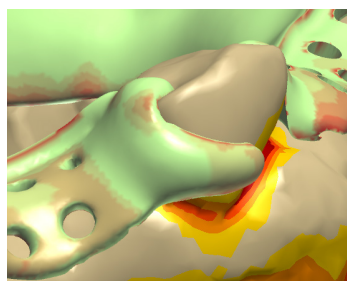
Width 2.0+ mm

Thickness 1.4+ mm



4. Sculpting and Finish Line

- Blend main features together with sculpting tool
- Add finish line with the “Ultaire™ AKP FLine” tool
- After drawing finish line, pay attention to orientation
 - Wall of the finish line should face retention grid
 - Slope should face lingual side and blend into major connector



5. Final Sculpting and Tissue Stops (if needed)

- Perform final sculpting while verifying framework dimensions listed on the front of this sheet
- Add tissue stops and posts when applicable

